



US 20050170552A1

(19) **United States**(12) **Patent Application Publication** (10) **Pub. No.: US 2005/0170552 A1****Koo et al.**(43) **Pub. Date: Aug. 4, 2005**(54) **FLAT PANEL DISPLAY DEVICE WITH
FIRST ELECTRODE HAVING
CONCENTRATION GRADIENT AND
FABRICATION METHOD THEREOF**(30) **Foreign Application Priority Data**

Dec. 26, 2001 (KR) 2001-85210

Publication Classification(75) **Inventors: Jae-Bon Koo, Yongin -city (KR);
Dong-Chan Shin, Hwaseong-city (KR)**(51) **Int. Cl.⁷ H01L 51/40; H01J 1/62;
H01J 63/04**(52) **U.S. Cl. 438/99****Correspondence Address:
STEIN, MCEWEN & BUI, LLP
1400 EYE STREET, NW
SUITE 300
WASHINGTON, DC 20005 (US)**(57) **ABSTRACT**

A method of fabricating a flat panel display comprises forming a first electrode, forming at least one organic electroluminescent layer on the first electrode, forming an second electrode, wherein the first electrode comprises a first component of a transparent material and a second component of a metallic material, and the forming of the first electrode comprises depositing the first and second components so as to have a gradual concentration gradient in which the first component is decreased while the second component is increased at a part in contact with the exposed electrode, according to a thickness of the first electrode. The first electrode functions as a pixel electrode and a black matrix of the flat panel display.

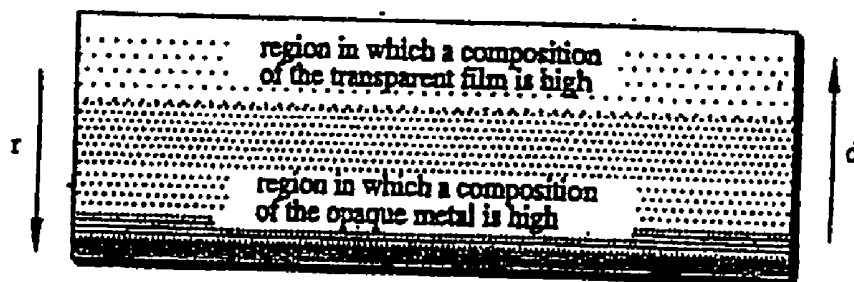
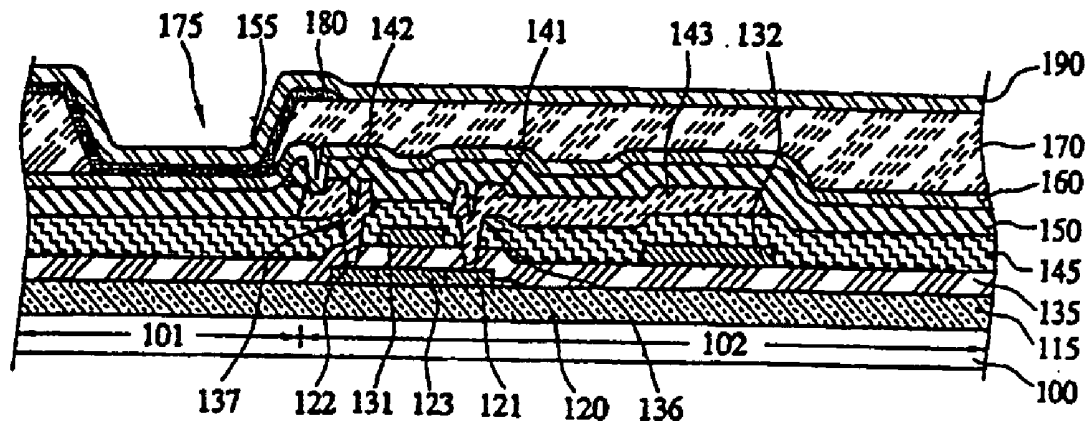
(73) **Assignee: Samsung SDI Co., Ltd., Suwon-si (KR)**(21) **Appl. No.: 11/092,891**(22) **Filed: Mar. 30, 2005****Related U.S. Application Data**(63) **Continuation of application No. 10/895,925, filed on
Jul. 22, 2004, now Pat. No. 6,902,943.**

FIG. 1A
(PRIOR ART)

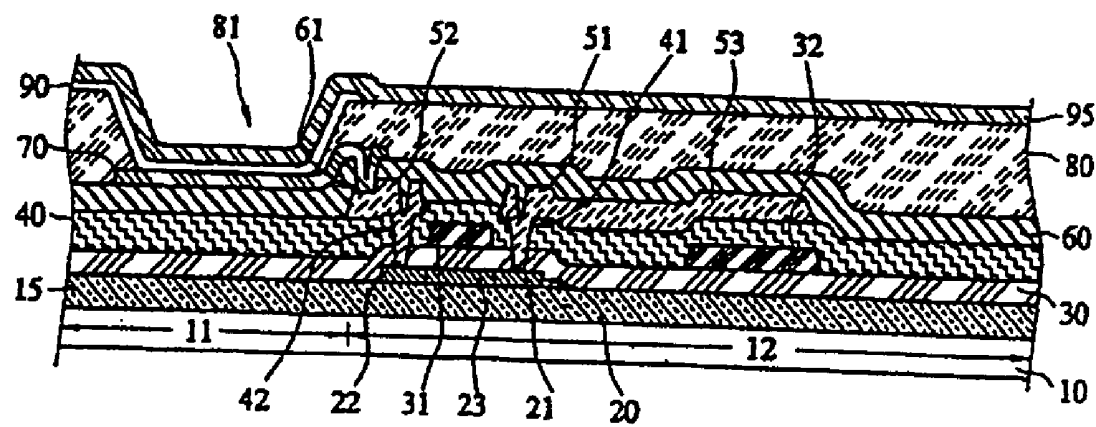


FIG. 1B
(PRIOR ART)

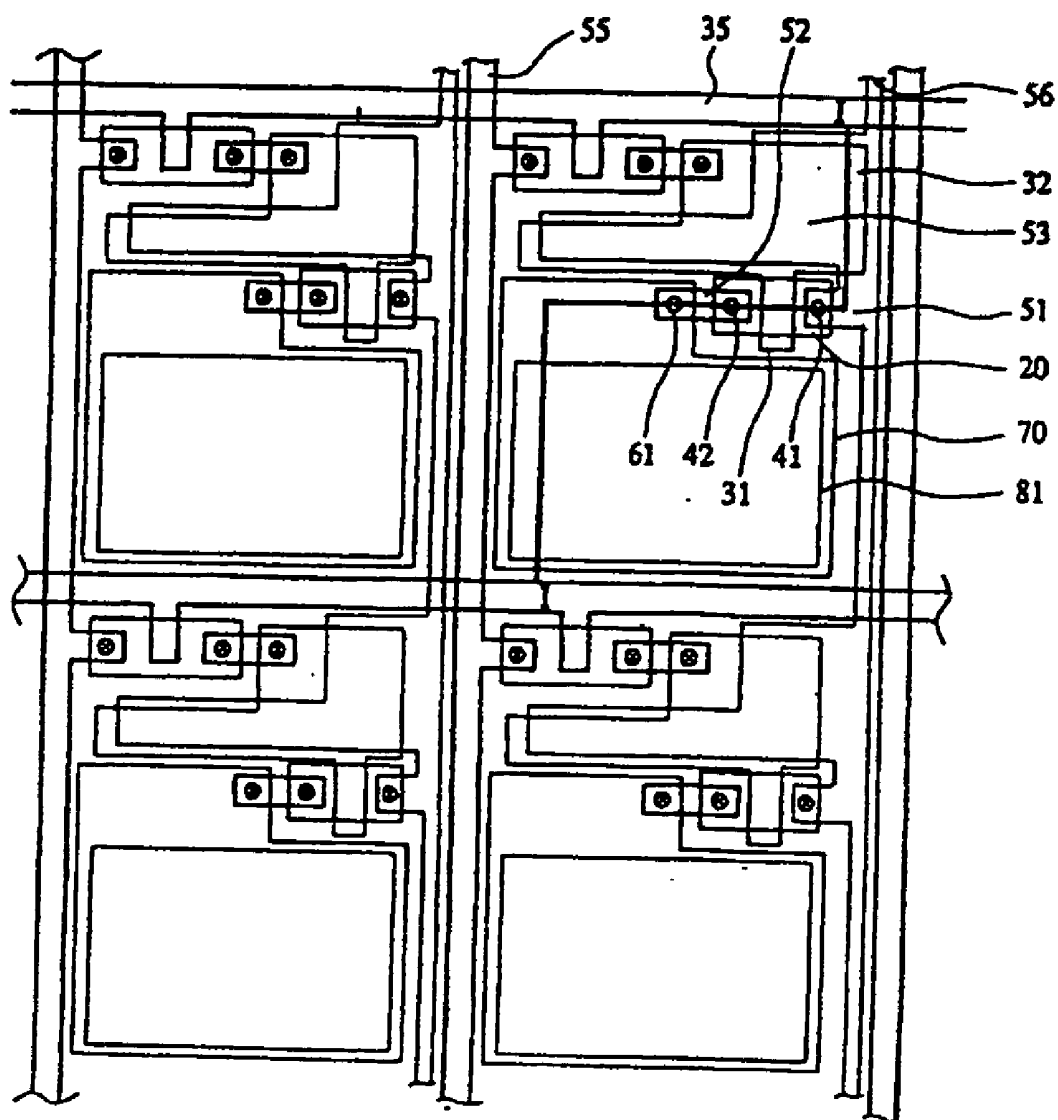


FIG. 2A

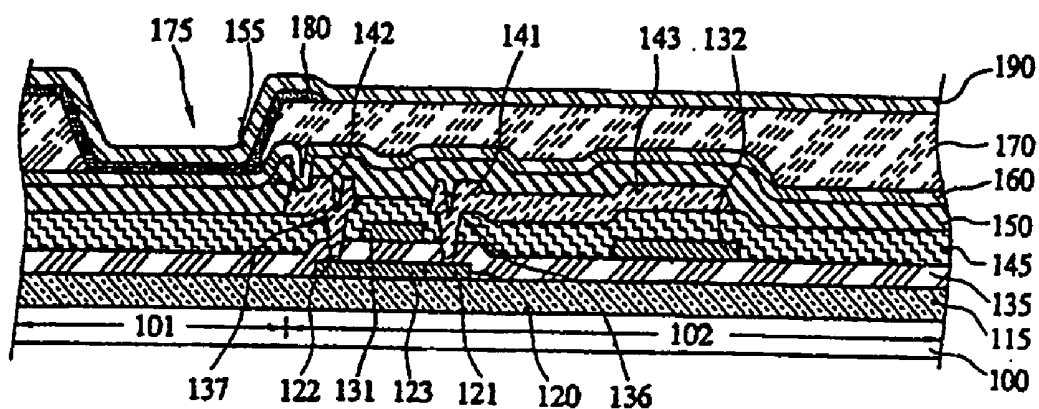


FIG. 2B

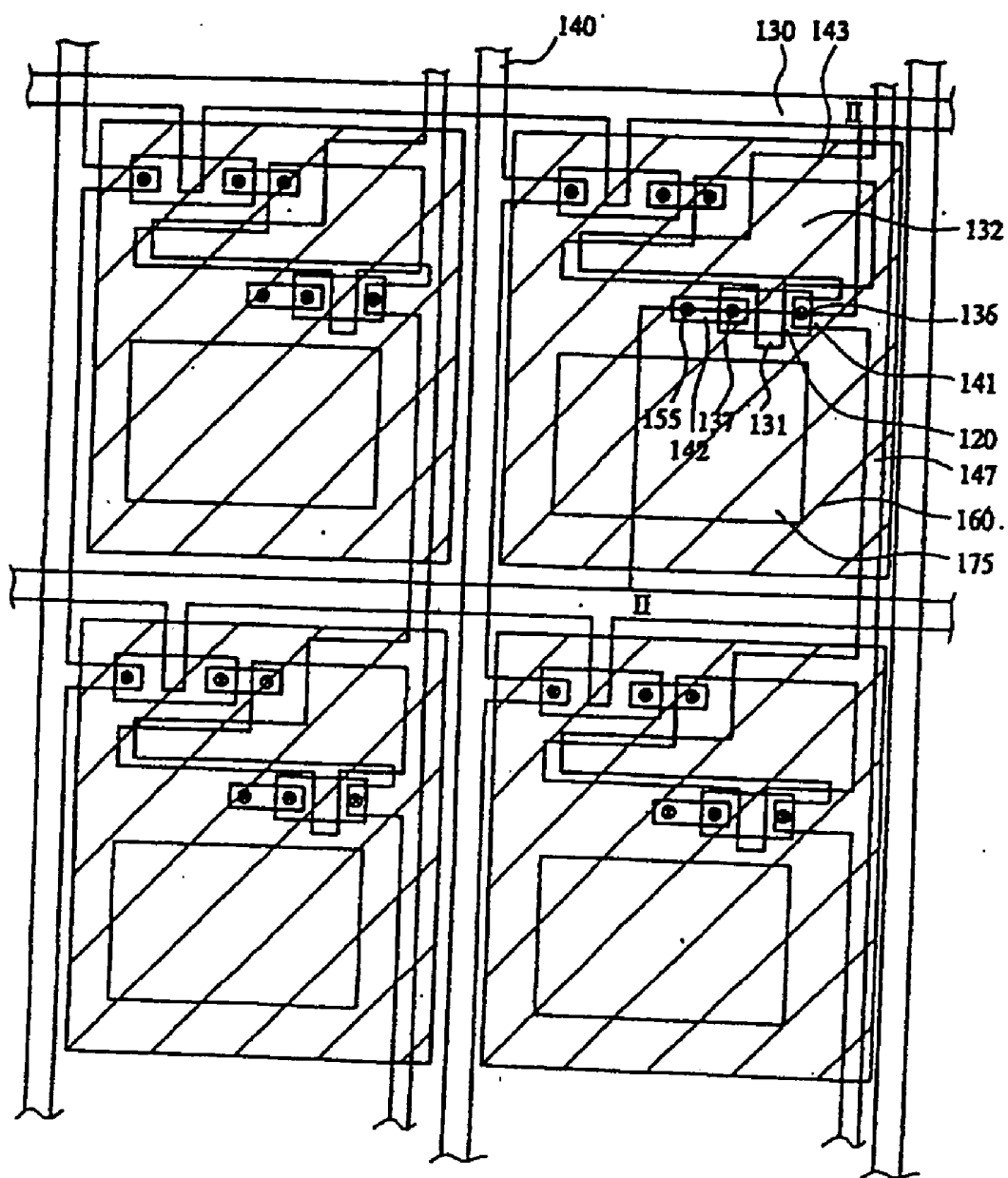
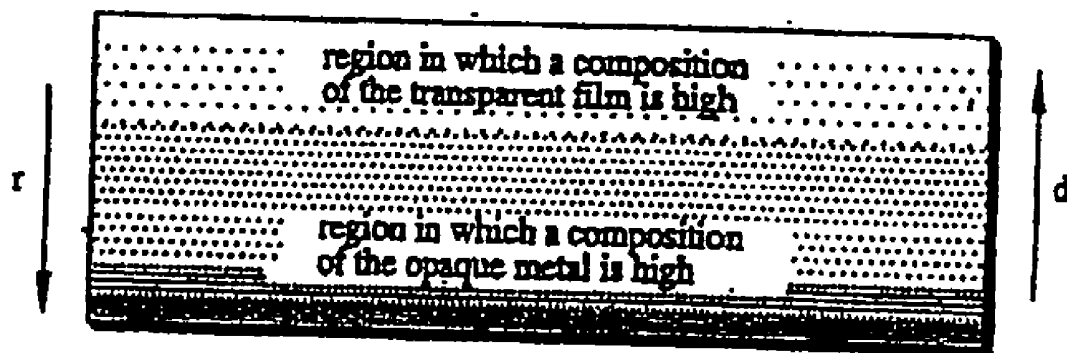


FIG. 3



**FLAT PANEL DISPLAY DEVICE WITH FIRST
ELECTRODE HAVING CONCENTRATION
GRADIENT AND FABRICATION METHOD
THEREOF**

**CROSS-REFERENCE TO RELATED
APPLICATIONS**

[0001] This application is a continuation of application Ser. No. 10/895,925, filed Jun. 22, 2004, now pending. This application claims the benefit of Korean Patent Application No. 2001-85210 filed on Dec. 26, 2001, in the Korean Intellectual Property Office, the disclosure of which is incorporated herein by reference.

BACKGROUND OF THE INVENTION

[0002] 1. Field of the Invention

[0003] The present invention relates to a flat panel display device, and more particularly, to a front light emitting type organic electroluminescent display device with a first electrode having a concentration gradient which functions as a pixel electrode and a black matrix at the same time, and a method of fabricating the front light emitting type organic electroluminescent display device.

[0004] 2. Description of the Related Art

[0005] **FIG. 1A** illustrates the cross-sectional structure of a conventional front light emitting type organic electroluminescent (EL) display device. **FIG. 1B** illustrates the plan structure of a conventional organic electroluminescent display device. **FIG. 1A** illustrates the cross-sectional structure taken along the line I-I of **FIG. 1B**.

[0006] Referring to **FIG. 1A** and **FIG. 1B**, a transparent insulation substrate **10** is divided into a first region **11** in which a pixel electrode is formed, and a second region **12** in which a thin film transistor (TFT) and a capacitor are formed. The second region **12** includes a semiconductor layer **20** in which source/drain regions **21** and **22** are formed, a thin film transistor equipped with a gate electrode **31** and source/drain electrodes **51** and **52**, and a capacitor equipped with a first electrode **32**, and a second electrode **53** connected to the source electrode **51** of the thin film transistor.

[0007] A gate insulating layer **30** is formed in a space between the semiconductor layer **20** and the gate electrode **31**.

[0008] An interlayer insulating layer **40** is formed in a space between the gate electrode **31** and the source/drain electrodes **51** and **52**.

[0009] A pixel electrode **70** connected to one of the source/drain electrodes **51** and **52**, e.g., the drain electrode **52** through a via hole **61**, is formed on a passivation layer **60** of the first region **11** as an anode electrode. A planarization layer **80** equipped with an opening part **81** which exposes a portion of the pixel electrode **70** is formed on the pixel electrode **70**. An organic EL layer **90** is formed in the opening part **81**, and a transparent electrode **95** is formed on the organic EL layer **90** as a cathode electrode.

[0010] References **35**, **55** and **56** of **FIG. 1B** represent gate lines, data lines and power supply lines, respectively.

[0011] In the above described conventional front light emitting type organic electroluminescent display device,

contrast deteriorates because a material having a high reflection ratio is used, thereby reflecting an external light through a metal wiring material, particularly a metallic material for source/drain electrodes.

[0012] Although the external light can be prevented from being reflected by adhering a polarizer onto a front of the conventional organic electroluminescent display device, using the polarizer is expensive, and a luminance of the organic electroluminescent display device is lowered because a transmittancy of light emitted from an organic electroluminescent (EL) layer of the organic electroluminescent display device is lowered by the polarizer. Furthermore, a life cycle of the organic EL layer is shortened where a current flowing through the conventional organic electroluminescent display device is increased to improve the luminance of the organic electroluminescent display device.

SUMMARY OF THE INVENTION

[0013] Accordingly, it is an object of the present invention to provide a flat panel display device having a black matrix which prevents reflection of an external light.

[0014] Another object of the present invention is to provide a simplified method of fabricating a flat panel display device where a black matrix and a pixel electrode of the flat panel display device are simultaneously formed by using a conductive layer having a predetermined concentration gradient of a transparent conductive material and a metallic material.

[0015] Yet another object of the present invention is to provide a flat panel display device which prevents formation of a surface profile due to a use of a black matrix, and a method of fabricating the flat panel display device thereof.

[0016] Still another object of the present invention is to provide a flat panel display device which reduces a surface resistance and a contact resistance of source/drain electrodes by using an Al series material as the source/drain electrodes, and a method of fabricating the flat panel display device thereof.

[0017] Additional objects and advantages of the invention will be set forth in part in the description which follows and, in part, will be obvious from the description, or may be learned by practice of the invention.

[0018] To achieve the above and other objects of the present invention, there is provided a method of fabricating a flat panel display, the method comprising forming a first electrode; forming at least one organic electroluminescent layer on the first electrode; forming a second electrode; wherein the first electrode comprises a first component of a transparent material and a second component of a metallic material, and the forming of the first electrode comprises depositing the first and second components so as to have a gradual concentration gradient in which the first component is decreased while the second component is increased at a part in contact with the exposed electrode, according to a thickness of the first electrode.

[0019] According to an aspect of the present invention, the first electrode functions as a black matrix as well as a pixel electrode of the display device.

[0020] The first component of the first electrode may be one of ITO, IZO and ZnO, and the second component

thereof may be one of Al, Cr, Mo, Ti, Ag, Au and W. The first electrode may be deposited by one of co-sputtering and co-evaporating the transparent first material and the metallic second material.

BRIEF DESCRIPTION OF THE DRAWINGS

[0021] These and other objects and advantages of the present invention will become apparent and more readily appreciated from the following description of the embodiments, taken in conjunction with the accompanying drawings of which:

[0022] **FIG. 1A** is a cross-sectional view of a conventional organic electroluminescent display device;

[0023] **FIG. 1B** is a plan view of the conventional organic electroluminescent display device shown in **FIG. 1A**;

[0024] **FIG. 2A** is a cross-sectional view of an organic electroluminescent display device according to an embodiment of the present invention;

[0025] **FIG. 2B** is a plan view of the organic electroluminescent display device shown in **FIG. 2A**; and

[0026] **FIG. 3** is a drawing illustrating concentration gradients of a transparent conductive material and a metallic material of a first electrode that is used as a pixel electrode and a black matrix in an organic electroluminescent display device of the present invention.

DETAILED DESCRIPTION OF THE PREFERRED EMBODIMENTS

[0027] Reference will now be made in detail to the embodiments of the present invention, examples of which are illustrated in the accompanying drawings, wherein like reference numerals refer to the like elements throughout. The embodiments are described below in order to explain the present invention by referring to the figures.

[0028] **FIG. 2A** shows a cross-sectional view of an organic electroluminescent display device according to an embodiment of the present invention, and **FIG. 2B** shows a plan view of the organic electroluminescent display device, wherein the **FIG. 2A** illustrates a cross-sectional structure taken along the line II-II of **FIG. 2B**.

[0029] Referring to **FIG. 2A** and **FIG. 2B**, the display device includes an insulation substrate **100** having a first region **101** to form a pixel electrode, and a second region **102** to form a thin film transistor (TFT) and a capacitor. A buffer layer **115** is formed on the insulation substrate **100**. The thin film transistor (TFT) is formed in a second region **102** of the insulation substrate **100**. The TFT comprises a semiconductor layer **120** equipped with n or p type source/drain regions **121** and **122**, a gate electrode **131**, and source/drain electrodes **141** and **142**, each of which is connected to the source/drain regions **121** and **122** through contact holes **136** and **137**, respectively.

[0030] A capacitor having a first electrode **132** and a second electrode **143** connected to the source electrode **141** are formed in the second region **102**. Each of insulation layers, e.g., a gate insulation layer **135** and an interlayer insulation layer **145**, are formed in a space surrounded by the semiconductor layer **120**, gate electrode **131** and first electrode **132**, and a space surrounded by the gate electrode **131**,

first electrode **132** and source/drain electrodes **141** and **142**, respectively. A part between the first electrode **132** and the second electrode **143** in the interlayer insulation layer **145** functions as a capacitor dielectric layer.

[0031] A passivation layer **150** is formed on the interlayer insulation layer **145** equipped with the TFT and the capacitor. A via hole **155**, which exposes a part of one electrode out of the source/drain electrodes **141** and **142**, e.g., the drain electrode **142**, is formed by etching the passivation layer **150**.

[0032] A first electrode **160** connected to the drain electrode **142** through the via hole **155** is formed on the passivation layer **150**. An opening part **175** which exposes a part corresponding to a first region in the first electrode **160** is formed after forming an insulation layer **170** on a front face of the insulation substrate **100**. An organic EL layer **180** is formed on the first electrode **160** exposed by the opening part **175**, and a cathode electrode is formed on the organic EL layer **180** as a transparent electrode **190**.

[0033] The insulation layer **170** formed on the passivation layer separation wall which prevents a short, and separates each of pixels of a pixel electrode (described herein below) under the insulation layer **170**.

[0034] The first electrode **160** functions as an anode electrode which is a pixel electrode of the organic electroluminescent display device, as well as a black matrix which prevents reflection of an external incident light. Since the transparent electrode **190** is used as a cathode electrode, a material having a smaller work function from that of the first electrode **160**, which functions as a pixel electrode, is used as a material for the transparent electrode **190**.

[0035] **FIG. 3** shows concentration gradients of a transparent conductive material and a metallic material of the first electrode **160**. The first electrode **160** includes a first component of a transparent conductive material and a second component of a metallic material, and has a gradual concentration gradient corresponding to a deposition thickness of the first electrode **160**.

[0036] That is, as illustrated in **FIG. 3**, the first electrode **160** is deposited in such a manner that the deeper an incidence depth "r" of external light is in an incidence direction, a concentration gradient of the first component of the transparent conductive material is gradually decreased while a concentration gradient of the second component of the metallic material is gradually increased. The rate of decrease/increase and the arrangement of the concentration gradients depend on a deposition thickness "d" of the first electrode **160**, wherein the transparent conductive material and the metallic material exist in an almost equal ratio at about a half deposition thickness of the first electrode **160**.

[0037] As described in the above, absorption rather than reflection of the external incident light occurs in the first electrode **160** since a composition ratio of the transparent conductive material and the metallic material is gradually and slowly changed by the gradual concentration gradients of the transparent conductive material and the metallic material. Therefore, the first electrode **160** functions as a black matrix which prevents reflection of the external light as reflection of the external light is inhibited by the first electrode **160**.

[0038] Indium tin oxide (ITO), indium zinc oxide (IZO), zinc oxide (ZnO), etc., can be used as a first component of a transparent conductive material of the first electrode 160, while Al, Cr, Mo, Ti, Ag, Au, W, etc., can be used as a second component of a metallic material of the first electrode 160. The first electrode 160 is deposited by, for example, simultaneously cosputtering or coevaporating the metallic material and the transparent conductive material.

[0039] The first electrode 160 is deposited in such a manner that the deeper an incidence depth “e” of external light is, a transparent conductive material is gradually decreased while a metallic material is gradually increased, depending on a deposition thickness “d” of the first electrode 160. Accordingly, a part which contacts the drain electrode 142 through the via hole 155, that is, a bottom of the first electrode 160, is formed with a relatively high composition of the metallic material while a part which contacts the organic EL layer 180, that is, an upper surface of the first electrode 160, is formed with a relatively high composition of the transparent conductive material.

[0040] Therefore, although it has conventionally been difficult to use Al having a low resistivity as source/drain electrodes, due to diffusion problems between Al and ITO (which is used as a transparent conductive layer or a pixel electrode), an organic electroluminescent display device of the present invention is capable of using Al as the source/drain electrode material by using the first electrode 160, which has gradual concentration gradients of the transparent conductive material and the metallic material, as a pixel electrode.

[0041] That is, diffusion problems between Al and the pixel electrode do not occur, although Al is used as the source/drain electrodes, since a composition of the transparent conductive material is relatively low, and a composition of the metallic material is relatively high at a part where the first electrode 160 is in contact with the drain electrode 142. Therefore, since Al can be used as the source/drain electrodes in an organic electroluminescent display device of the present invention, a surface resistance of the source/drain electrodes as well as a contact resistance between the pixel electrode and the source/drain electrodes can be reduced.

[0042] The first electrode 160 is conductive since it functions as the pixel electrode and the black matrix at the same time. Therefore, the first electrode 160 should be separately formed per each pixel electrode of an organic electroluminescent display device. An organic electroluminescent display device according to the present invention has a structure in which a first electrode 160 is formed on a front surface of a pixel region defined by gate lines 130, data lines 140 and power supply lines 147, as illustrated in the planar structure of FIG. 2B. However, the structure is not limited thereto, and it is understood that other arrangements can be made so as to have the first electrode be electrically separated between each of the pixels.

[0043] Although a first electrode 160 having gradual concentration gradients of first and second materials is illus-

trated as both a pixel electrode and a black matrix with respect to a front light emitting type organic electroluminescent display device, it is understood that the present invention can be applied to other display devices including a reflection type liquid crystal display device.

[0044] Additionally, a display device of the present invention can be an all organic electroluminescent display device having an electrode layer, which does not transmit light from an organic thin layer formed between two electrodes, that functions as a first electrode.

[0045] A formation of an organic electroluminescent (EL) display device of the present invention is simple because a pixel electrode and a black matrix of the organic EL display device are formed at the same time using a conductive layer-having gradual concentration gradients of a transparent conductive material and a metallic material.

[0046] In an organic EL display device of the present invention, a luminance is improved by preventing reflection of external light without the use of an expensive polarizer. Additionally shorts between wirings are prevented by preventing the formation of a surface profile due to the formation of a black matrix.

[0047] Furthermore, an organic EL display device of the present invention is capable of using Al having a low resistance as source/drain electrodes. A conductive layer, in which a part which contacts the source/drain electrodes has a low composition of an ITO and a high composition of a metallic material, is used as a pixel electrode. Accordingly, an Al-series material can be used as the source/drain electrodes, and a contact resistance between the source/drain electrodes and the pixel electrode is reduced.

[0048] Although a few embodiments of the present invention have been shown and described, it will be appreciated by those skilled in the art that changes may be made in these embodiments without departing from the principles and spirit of the invention, the scope of which is defined in the appended claims and their equivalents.

What is claimed is:

1. A method of fabricating a flat panel display, the method comprising:

forming a first electrode;

forming at least one organic electroluminescent layer on the first electrode;

forming a second electrode;

wherein the first electrode comprises a first component of a transparent material and a second component of a metallic material, and

the forming of the first electrode comprises depositing the first and second components so as to have a gradual concentration gradient in which the first component is decreased while the second component is increased at a part in contact with the exposed electrode, according to a thickness of the first electrode.

2. The method according to claim 1, wherein the first component of the first electrode is one of ITO, IZO and ZnO, and the second component is one of Al, Cr, Mo, Ti, Ag, Au and W.
3. The method according to claim 2, wherein the depositing of the first electrode comprises one of cosputtering and coevaporating the first component and the second component.

4. The method according to claim 2, wherein the first electrode functions as a black matrix as well as a pixel electrode of the display.
5. The method according to claim 1, wherein the second electrode is transparent.
6. The method according to claim 5, wherein the second electrode comprises one of ITO, IZO and ZnO.

* * * * *

专利名称(译)	具有浓度梯度的第一电极的平板显示装置及其制造方法		
公开(公告)号	US20050170552A1	公开(公告)日	2005-08-04
申请号	US11/092891	申请日	2005-03-30
申请(专利权)人(译)	三星SDI CO. , LTD.		
当前申请(专利权)人(译)	三星DISPLAY CO. , LTD.		
[标]发明人	KOO JAE BON SHIN DONG CHAN		
发明人	KOO, JAE-BON SHIN, DONG-CHAN		
IPC分类号	H05B33/10 H01L27/11 H01L27/32 H01L51/52 H01L51/40 H01J1/62 H01J63/04		
CPC分类号	H01L27/1104 H01L27/3244 H01L51/5206 H01L2251/5346 H01L51/5284 H01L2251/5315 H01L51/5234 H01L27/326 H01L51/5209		
优先权	1020010085210 2001-12-26 KR		
其他公开文献	US7052931		
外部链接	Espacenet USPTO		

摘要(译)

制造平板显示器的方法包括形成第一电极，在第一电极上形成至少一个有机电致发光层，形成第二电极，其中第一电极包括透明材料的第一组分和金属的第二组分材料和第一电极的形成包括沉积第一和第二组分，以便具有逐渐的浓度梯度，其中第一组分减少，而第二组分在与暴露的电极接触的部分增加，根据第一电极的厚度。第一电极用作平板显示器的像素电极和黑矩阵。

